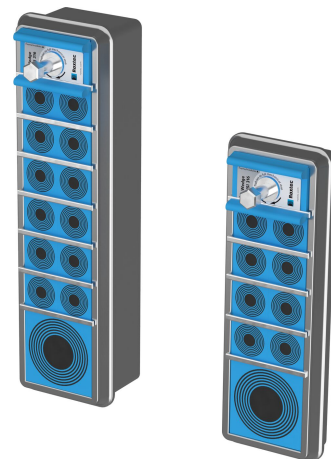




# Roxtec C LW/K brtva

Lagana prijelazna brtva za zavarivanje na strukturu.

Roxtec C LW/K su kompaktna i lagana, ali vrlo jaka rješenja za brtvljenje za tranzite više kabela i cijevi. Brtve se proizvode od aluminija, a dostupni su u pet različiti veličina te se isporučuju u verzijama različite dubine: C LW okvir je dubok 30 mm dok C LW K okvir ima produženu dubinu od 60 mm. Na konstrukciju su pričvršćeni zavarivanjem. Brtveni moduli mogu se prilagoditi kabelima, cijevima i vodovima različitih veličina te se mogu koristiti za stvaranje dodatnog prostora u brtvenom prstenu. Pruža protupožarnu i zaštitu od prodora te retenciju kabela otpornu na vibracije, a kao takav idealan je za podne i zidne primjene u sektorima mobilnosti, kao što su željeznička vozila.



- Lagano
- Površinski učinkovito
- Osigurava rezervni prostor

## Karakteristike proizvoda



Vatrootpornost



IP/UL NEMA

## Struktura instalacije



Ormari i kućišta



Metal

## Vrsta montaže



Zavarivanje

## Klase i certifikati

### Požar

- Razred E/EI u skladu s normom EN 45545 E30
- HL3 prema EN 45545-2 (R22, R23)

### Nepropusnost

- IP 66 prema IEC 60529

### Podržava

- Kategorija udara i vibracija 2 prema IEC 61373

## Dimenzije okvira

mm/kg

Varijante okvira u nastavku ograničen su izbor. Za cijeli raspon okvira i konfiguracija posjetite [roxtec.com](https://www.roxtec.com).

Proizvod	Otvori okvira	Prostor za smještaj	Vanjske dimenzije WxHxD	Dimenzije otvora w x h	Težina	Broj artikla
C LW 3x1 ALU	1	60 x 120	84.2 x 182.5 x 30	76(+1/-1) x 174.5(+1/-1)	0.27	237919
C LWK 3x1 ALU	1	60 x 120	84.2 x 182.5 x 60	76(+1/-1) x 174.5(+1/-1)	0.45	237924
C LW 4x1 ALU	1	120 x 120	144.2 x 182.5 x 30	136(+1/-1) x 174.5(+1/-1)	0.34	237922
C LWK 4x1 ALU	1	120 x 120	144.2 x 182.5 x 60	136(+1/-1) x 174.5(+1/-1)	0.56	237927
C LW 5x1 ALU	1	60 x 180	84.2 x 240.5 x 30	76(+1/-1) x 232.5(+1/-1)	0.33	237920
C LWK 5x1 ALU	1	60 x 180	84.2 x 240.5 x 60	76(+1/-1) x 232.5(+1/-1)	0.56	237925
C LW 6x1 ALU	1	120 x 180	144.2 x 240.5 x 30	136(+1/-1) x 232.5(+1/-1)	2.44	237923
C LWK 6x1 ALU	1	120 x 180	144.2 x 240.5 x 60	136(+1/-1) x 232.5(+1/-1)	0.7	237928
C LW 7x1 ALU	1	60 x 240	84.2 x 300.5 x 30	76(+1/-1) x 292.5(+1/-1)	2.47	237921
C LWK 7x1 ALU	1	60 x 240	84.2 x 300.5 x 60	76(+1/-1) x 292.5(+1/-1)	0.68	237926

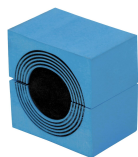


# Komponente za brtvljenje

## Komponente za brtvljenje



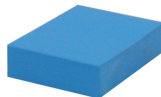
Lubricant Blue



Modul CM sa značajkom Multidiameter™



Nivelacijska pločica C



Čvrsti modul za kompenzaciju CM



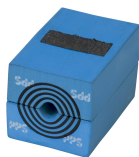
Klin i komplet klinova C



Učvršćenje za zavarivanje Roxtec



Alati za pridržavanje Roxtec



Modul CM PPS sa značajkom Multidiameter™

Za detaljne informacije posjetite [roxtec.com](https://www.roxtec.com).

The product information provided by Roxtec does not release the purchaser of the Roxtec system, or part thereof, from the obligation to independently determine the suitability of the products for the intended process, installation and/or use.

Roxtec gives no guarantee for the Roxtec system or any part thereof and assumes no liability for any loss or damage whatsoever, whether direct, indirect, consequential, loss of profit or otherwise, occurred or caused by the Roxtec systems or installations containing components not manufactured by an authorized manufacturer and/or occurred or caused by the use of the Roxtec system in a manner or for an application other than for which the Roxtec system was designed or intended.

Roxtec expressly excludes any implied warranties of merchantability and fitness for a particular purpose and all other express or implied representations and warranties provided by statute or common law. User determines suitability of the Roxtec system for intended use and assumes all risk and liability in connection therewith. In no event shall Roxtec be liable for indirect, consequential, punitive, special, exemplary or incidental damages or losses.

The Roxtec products are offered and sold in accordance with the conditions of the Roxtec General Terms of Sales. The latest version of the Roxtec General Terms of Sales can be downloaded from <https://www.roxtec.com/en/about-us/about-roxtec/general-terms-of-sales/>

We reserve the right to make changes to the product and technical information without further notice. Any errors in print or entry are no claims for indemnity. The content of this publication is the property of Roxtec International AB and is protected by copyright.

This document was generated on = 2026-06-21

